



# MountainScope: OWS-6 Aviation Handheld Client

---

Todd K. Sprague  
PCAvionics

AIXM/WXXM Conference and Seminar  
Washington DC, May 12 – 14, 2009

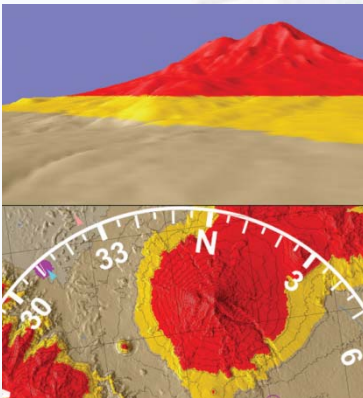
# Introduction

MountainScope is an aviation moving-map program that specializes in real-time situational awareness.

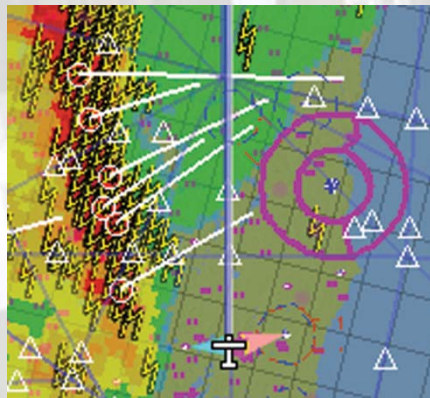


# Features

It combines an aviation database, traffic, weather, and high-resolution terrain to give the pilot an integrated view of the common hazards and standard VFR sectional charts.



Terrain



XM Weather

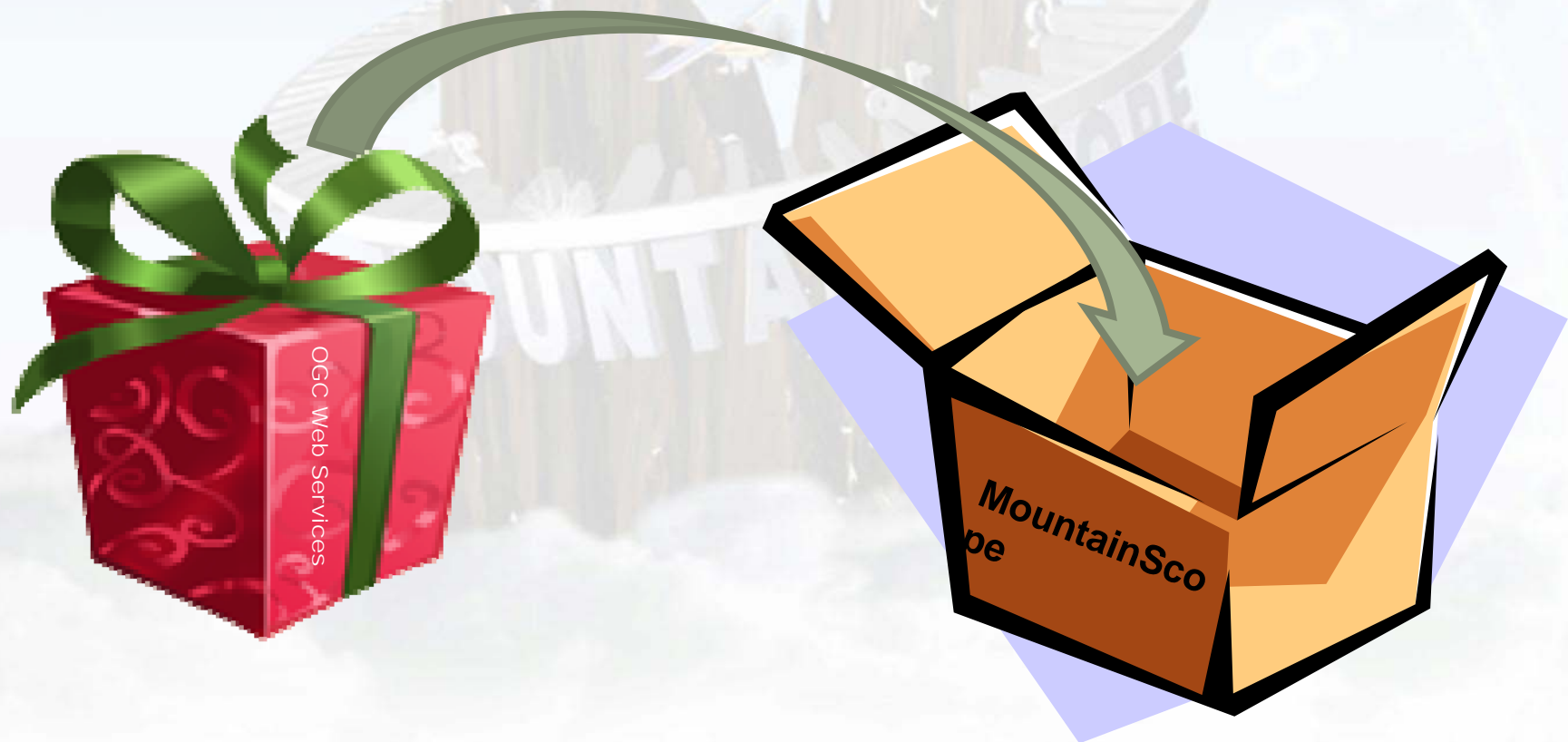


ADS-B Traffic



# Open Geospatial Consortium

In the fall of 2008, PCAvionics joined OGC/OWS-6 to turn MountainScope into an aviation client testbed for the AIXM/WFS standards.



# Real-Time Information

Using OGC's Web Services, MountainScope was enhanced to:

- Make spatially-filtered WFS requests
- Make temporally-filtered WFS requests
- Download and display weather information
- Download and display airport diagrams
- Display runway and taxiway closures

# WFS Filtering

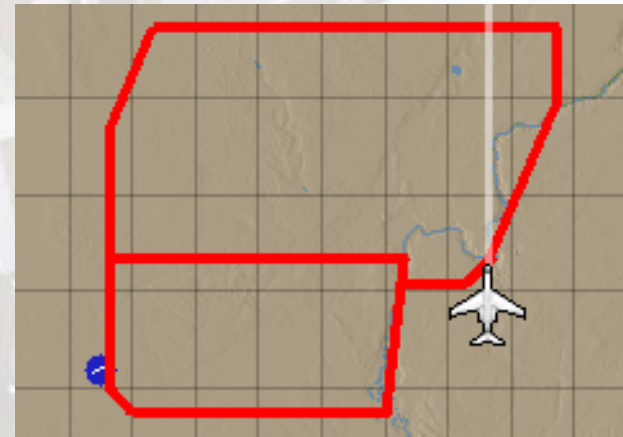
Using filter encoding as part of the WFS request enabled context-sensitive features:

- User could click on an airport and request weather or updated info about that airport
- User could use the flight plan menu to request weather or updated AIP information for the entire flight plan
- Requests could be filtered to temporally limit the returned data to include only the expected time of flight

# Weather Information

Using the Weather.aero WFS server, MountainScope downloaded and displayed METARs, TAFs, PIREPs, AIRMETs and SIGMETs.

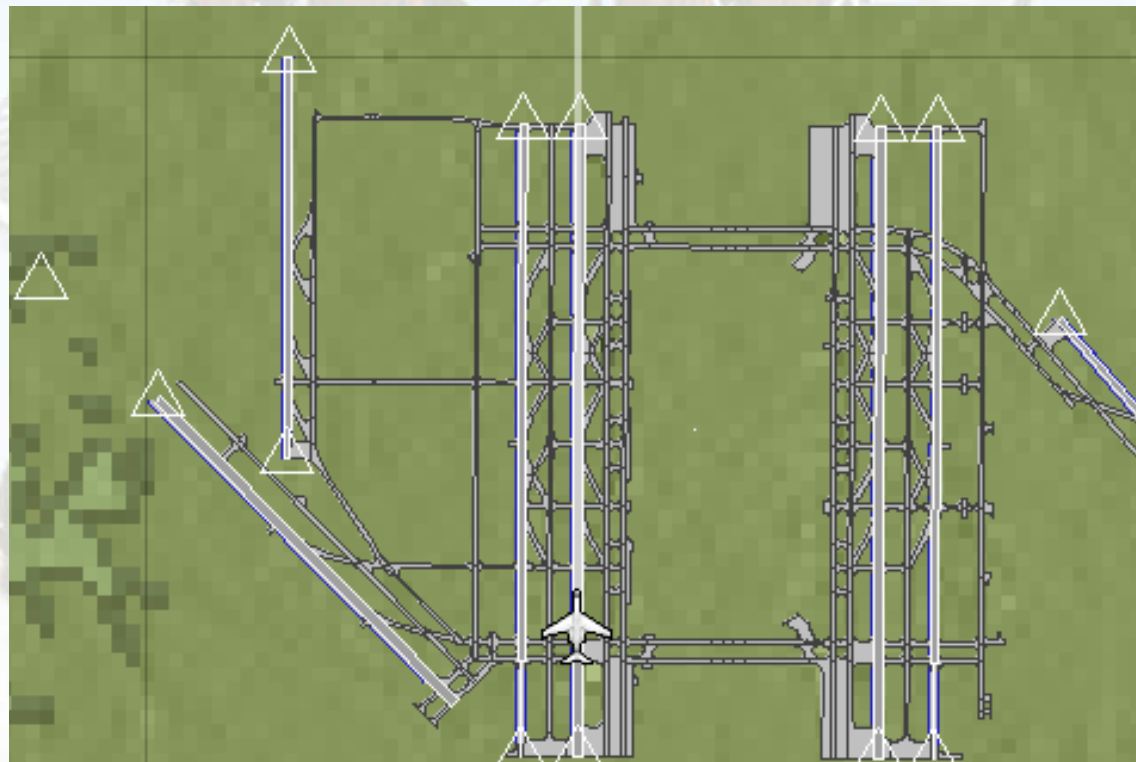
```
^ DALLAS FORT WORTH INTL X
IBXN ILS/DME RW36L : 111.9MHz
IFJN ILS/DME RW36R : 110.55MHz
UNICOM : 122.95MHz
Available Fuel:
100LL (BLUE)
Jet A, without icing inhibitor
METAR :
KDFW 120430Z 34008KT 10SM CLR 05/M02
TAF :
KDFW 120400Z 1204/1207 34008KT P6SM
```





# Airport Diagrams

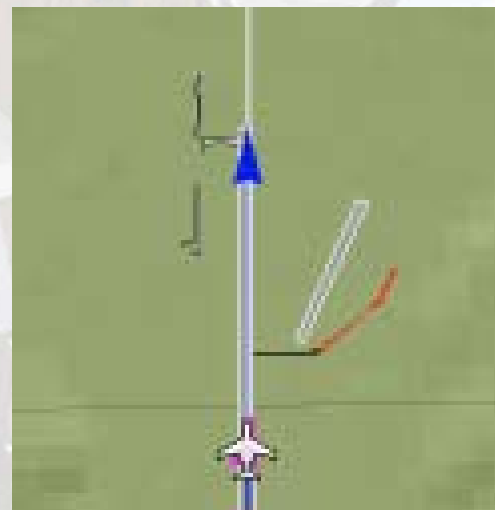
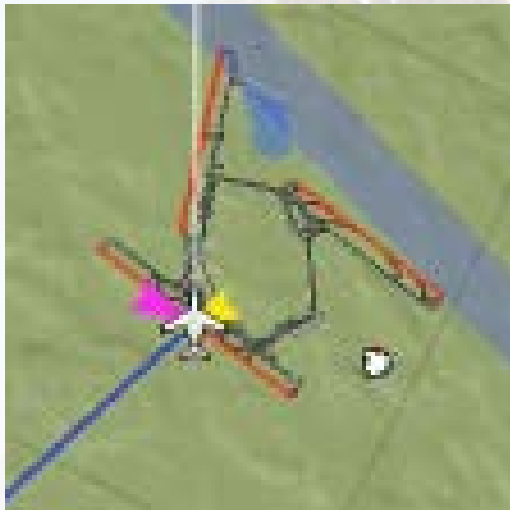
MountainScope downloaded airport diagrams from the OWS-6 demo server at Snowflake Software, for display on the moving-map.





# Runway and Taxiway Closures

Using xNOTAM events, MountainScope alerted the pilot regarding closed runways and taxiways.



# Design Challenges

Vendors new to AIXM and/or WFS may encounter a few challenges along the way:

- WFS is a standard that requires time and effort before one can make requests and use responses
- The AIXM schema are very large and complicated, making implementation of a general solution difficult
- Conversion of the AIP data to vendor's proprietary internal format requires in-depth understanding of AIXM

# Summary

Joining OGC was productive for PCAvionics, to bring OGC Web Services into our MountainScope moving-map product.

By being a part of OWS-6, PCAvionics was able to bring an aviation industry vendor perspective to the OGC and AIXM standards, which we hope will contribute to their further development and wider use by vendors.