

# Airport/Heliport AIXM Feature

Washington D.C. | October 10 - 11, 2007

AIXM Class | **2007**

AIXM 5 RC2

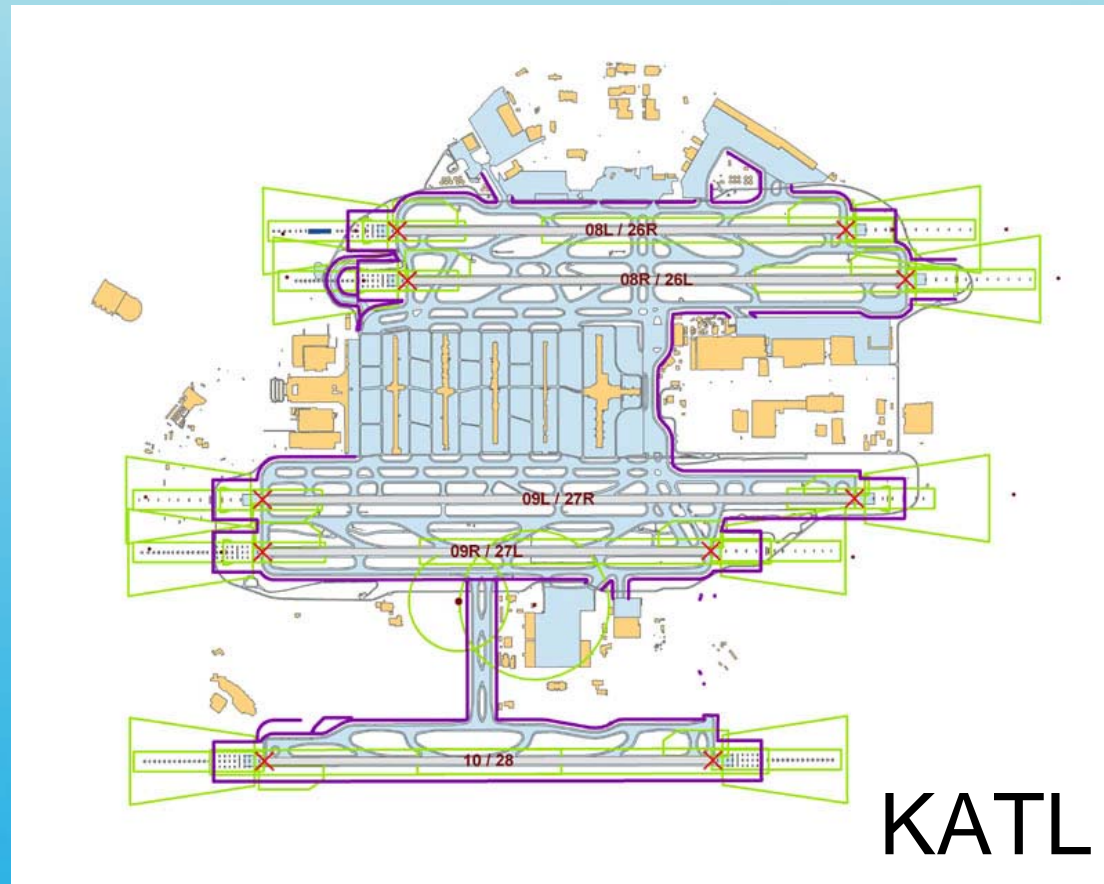


EUROCONTROL



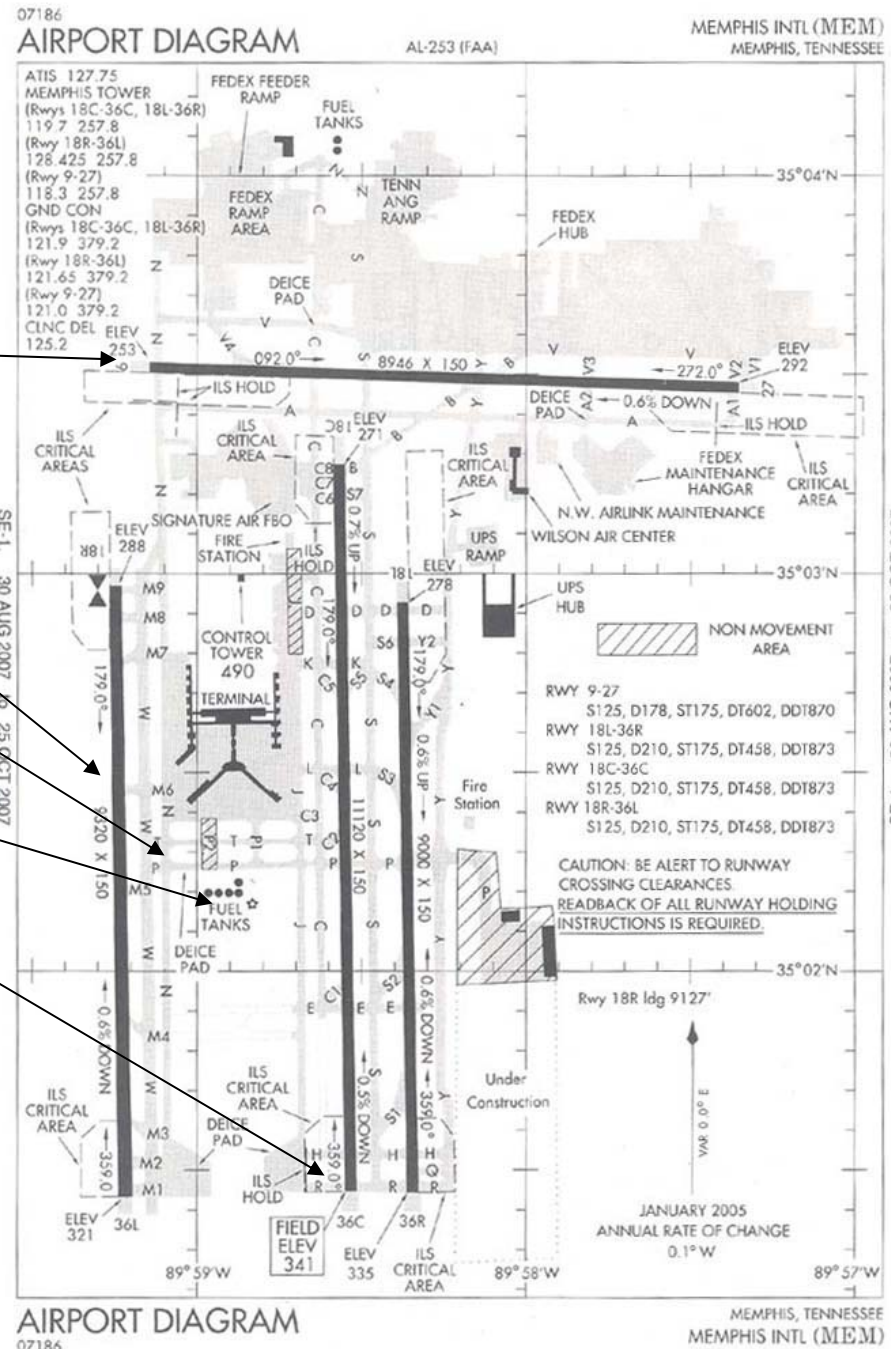
# Airport and Heliport

- Airport environment:
  - Runway
  - Taxiway
  - Lighting
  - Markings
  - Apron
  - Surface Contamination
  - Helicopter Surfaces
- Airport Facilities

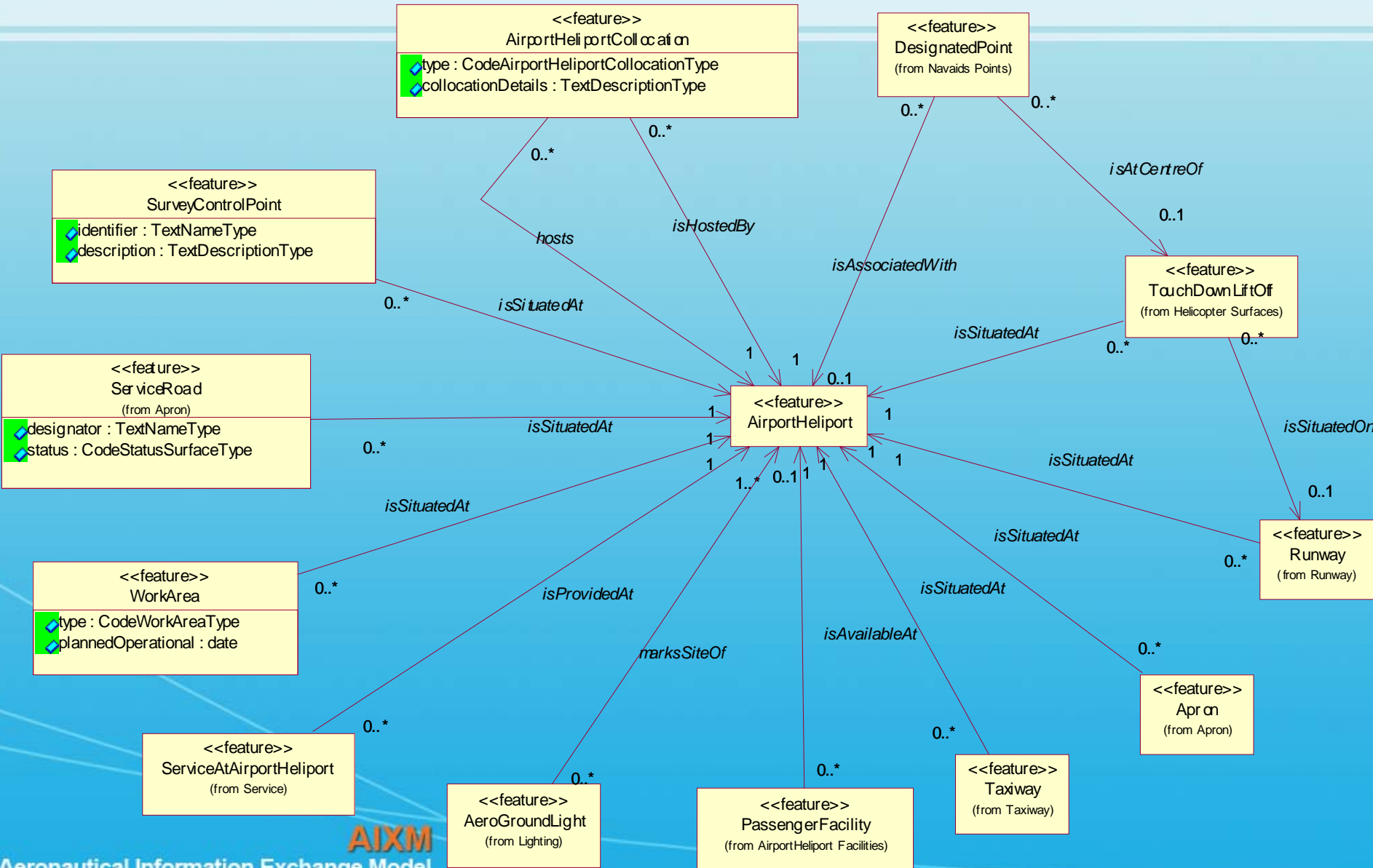


# Memphis Airport (MEM)

- Runways
- Taxiways
- ILS
- Fuel tanks



# AirportHeliport AIXM Feature

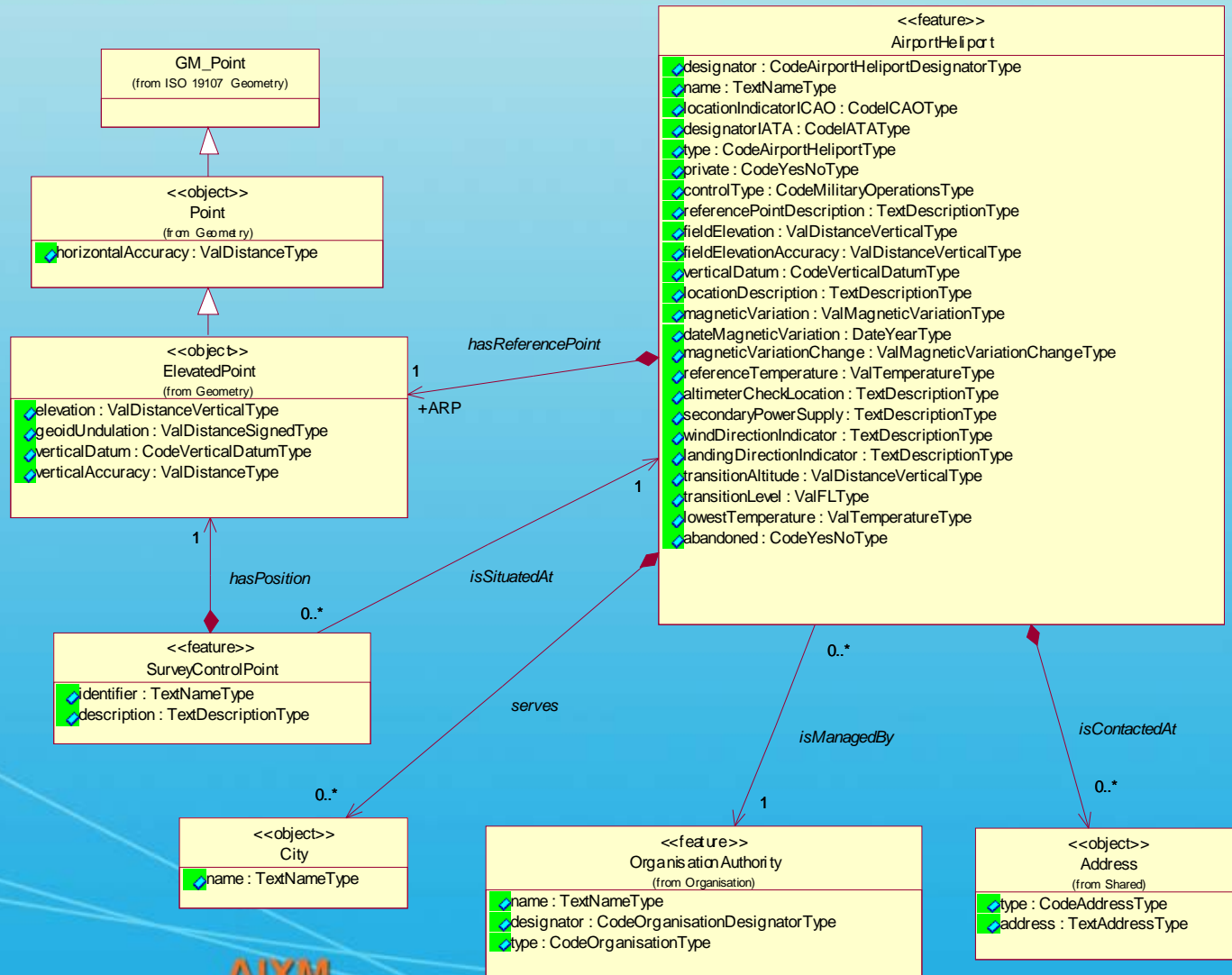


# AirportHeliport AIXM Feature

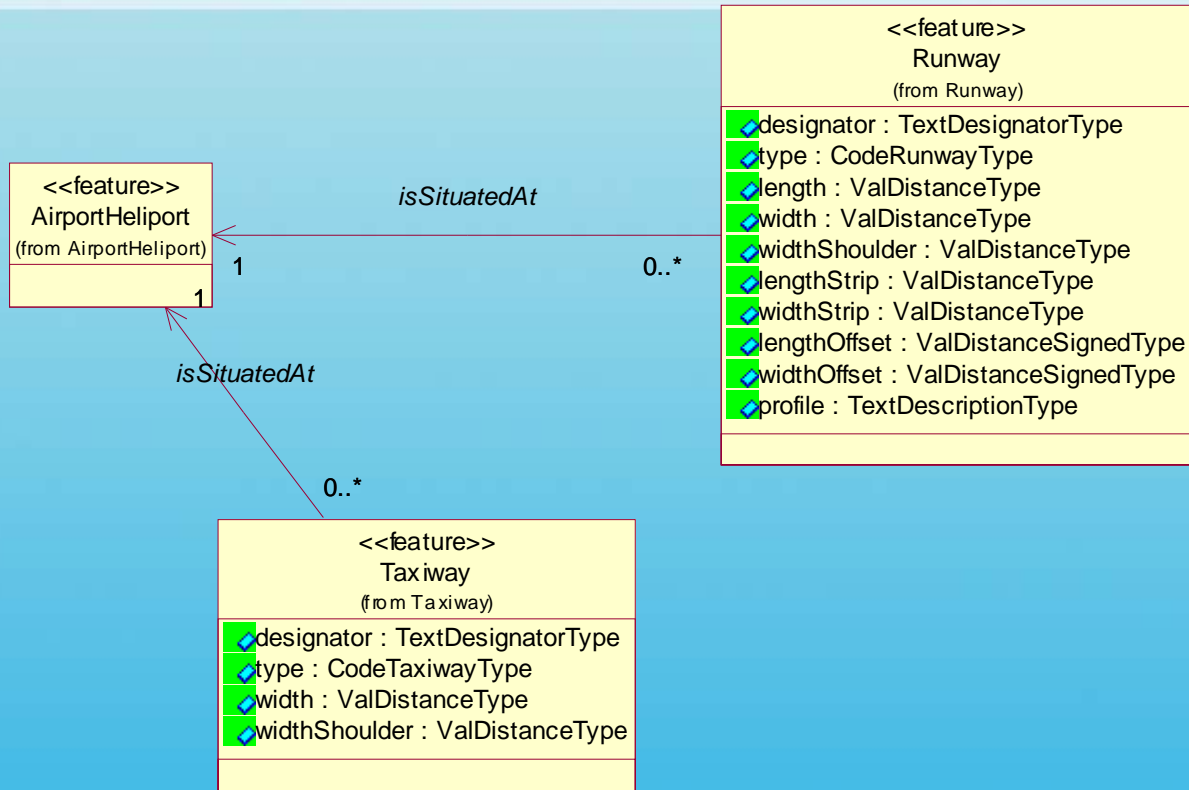
- Models generic attributes
- Major operational components of an airport are AIXM features
  - Runway
  - Taxiway

<<feature>> AirportHeliport
+ designator : CodeAirportHeliportDesignatorType
+ name : TextNameType
+ locationIndicator ICAO : CodeICAOType
+ designator IATA : CodeIATAType
+ type : CodeAirportHeliportType
+ private : CodeYesNoType
+ controlType : CodeMilitaryOperationsType
+ referencePointDescription : TextDescriptionType
+ fieldElevation : ValDistanceVerticalType
+ fieldElevationAccuracy : ValDistanceVerticalType
+ verticalDatum : CodeVerticalDatumType
+ locationDescription : TextDescriptionType
+ magneticVariation : ValMagneticVariationType
+ dateMagneticVariation : DateYearType
+ magneticVariationChange : ValMagneticVariationChangeType
+ referenceTemperature : ValTemperatureType
+ altimeterCheckLocation : TextDescriptionType
+ secondaryPowerSupply : TextDescriptionType
+ windDirectionIndicator : TextDescriptionType
+ landingDirectionIndicator : TextDescriptionType
+ transitionAltitude : ValDistanceVerticalType
+ transitionLevel : ValFLType
+ lowestTemperature : ValTemperatureType
+ abandoned : CodeYesNoType

# AirportHeliport

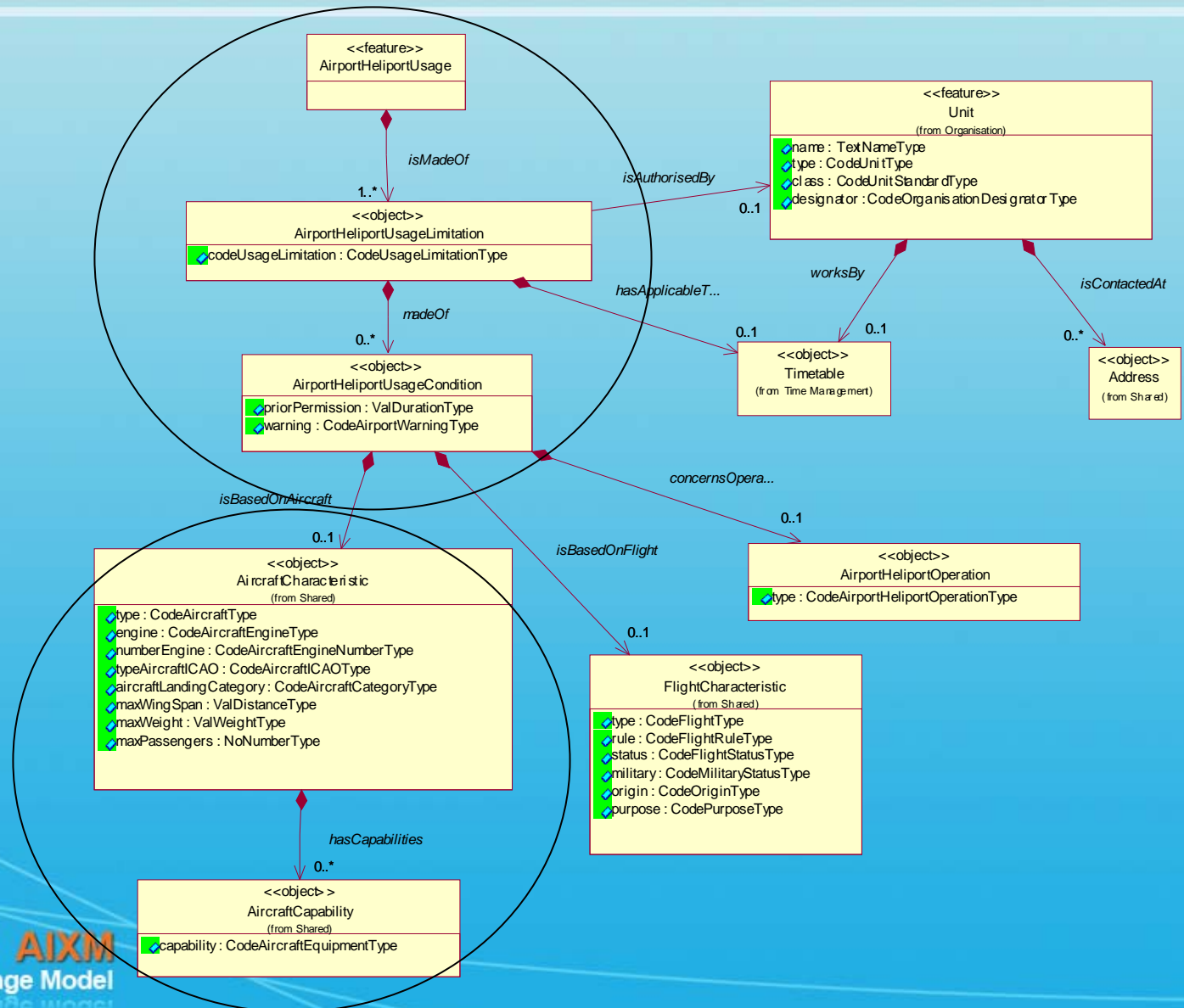


# AirportHeliport Associations



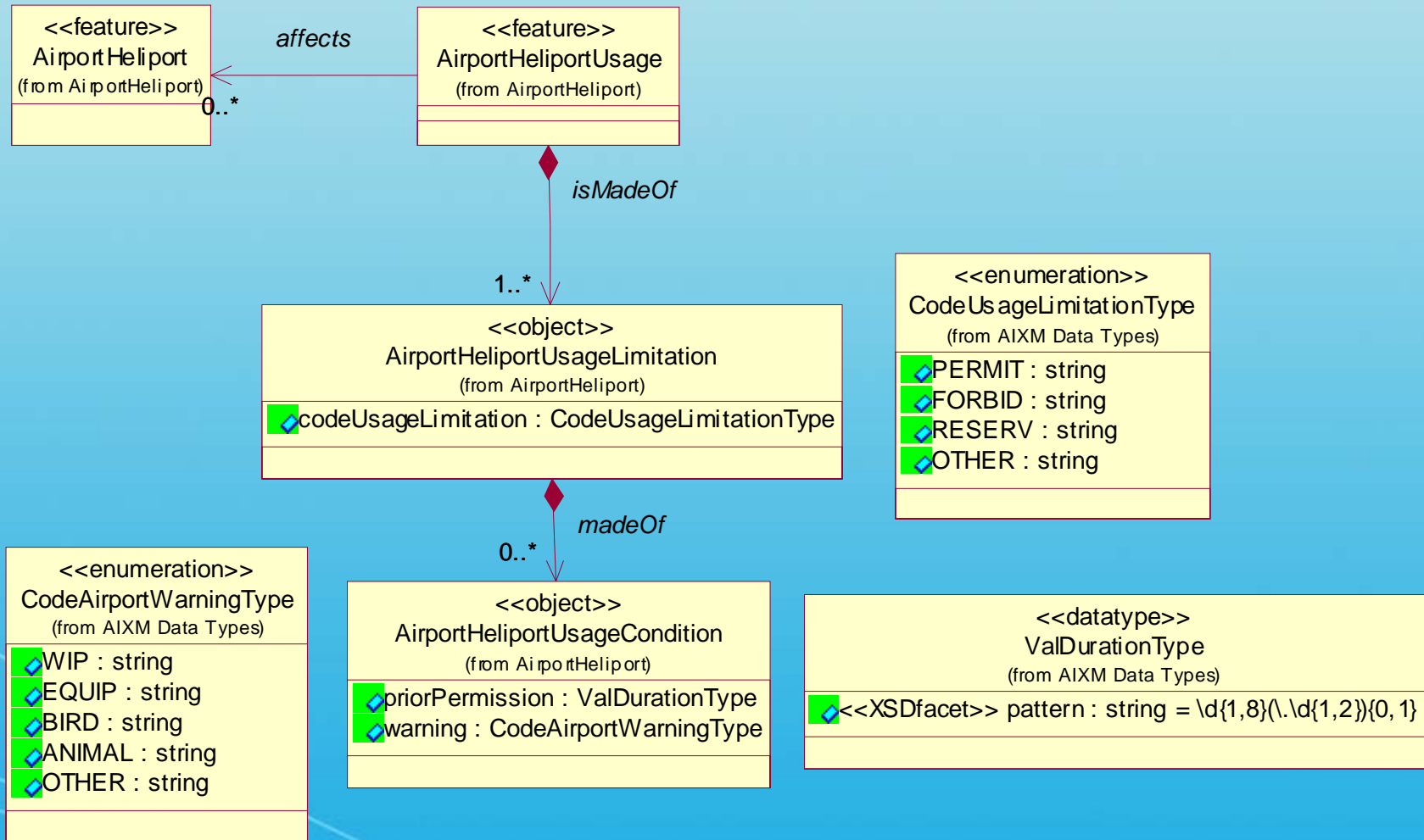
- Runways
- Taxiways

# Airport Heliport Usage

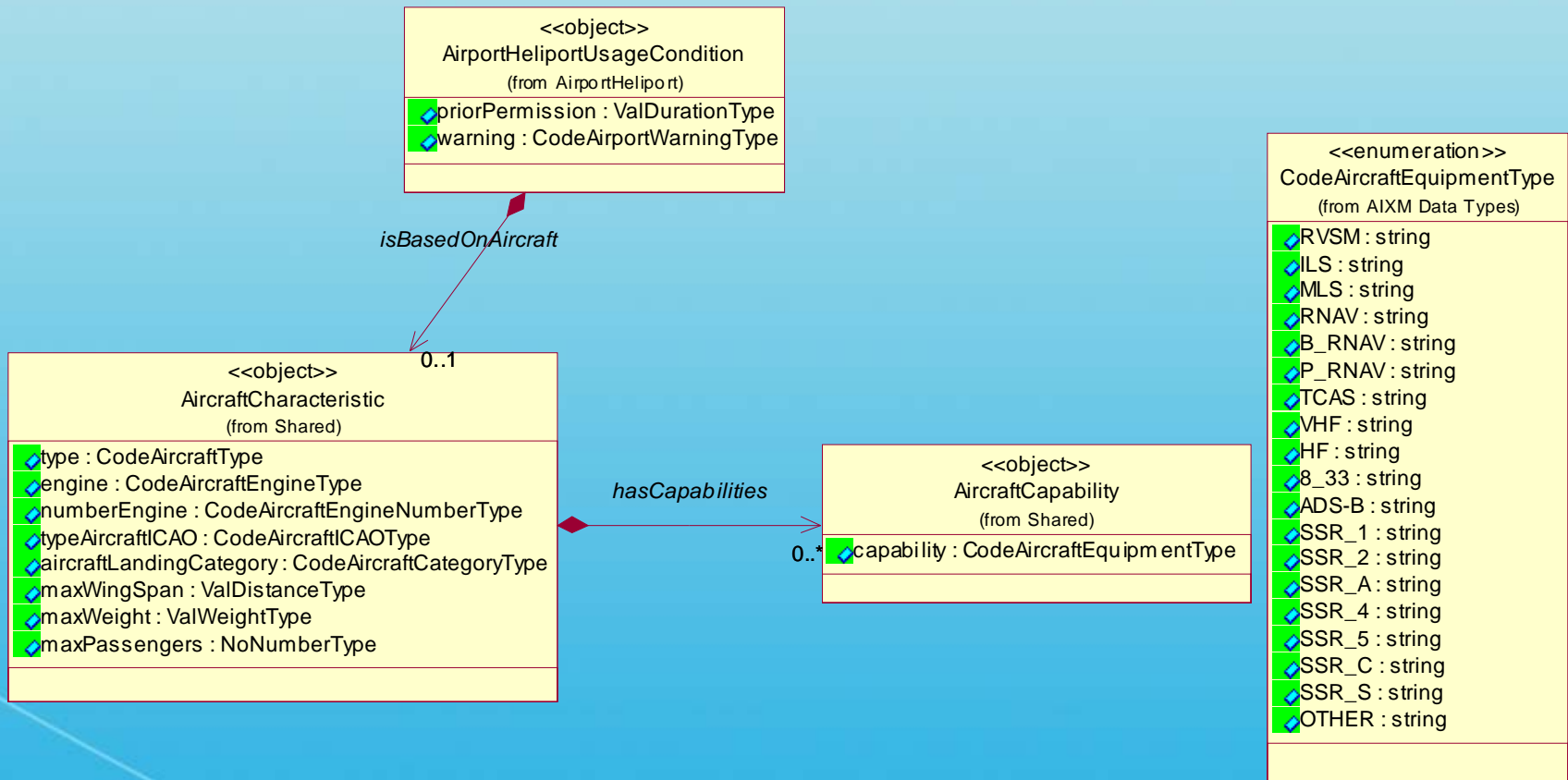




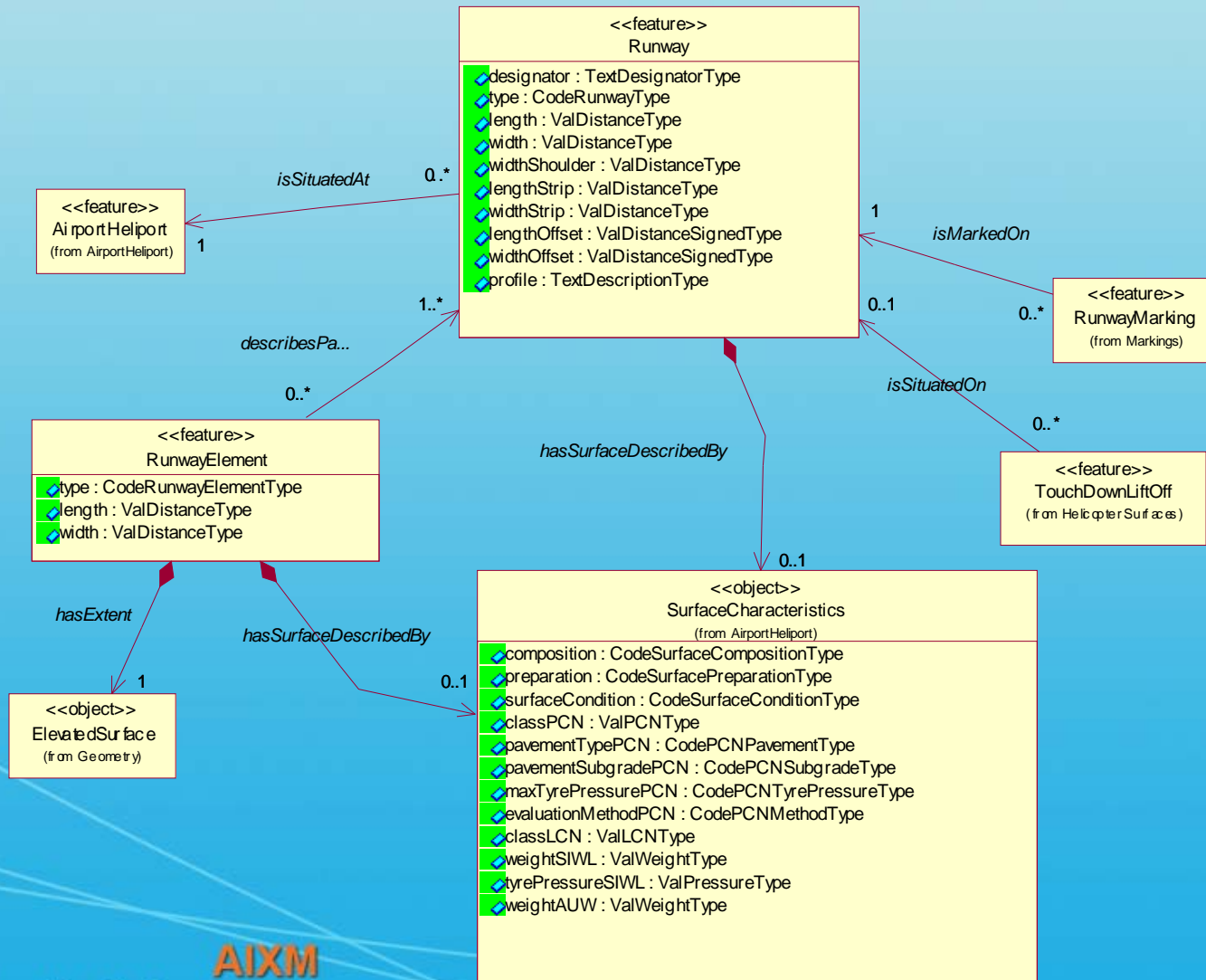
# Airport Heliport Usage



# Airport Heliport Usage



# Runway

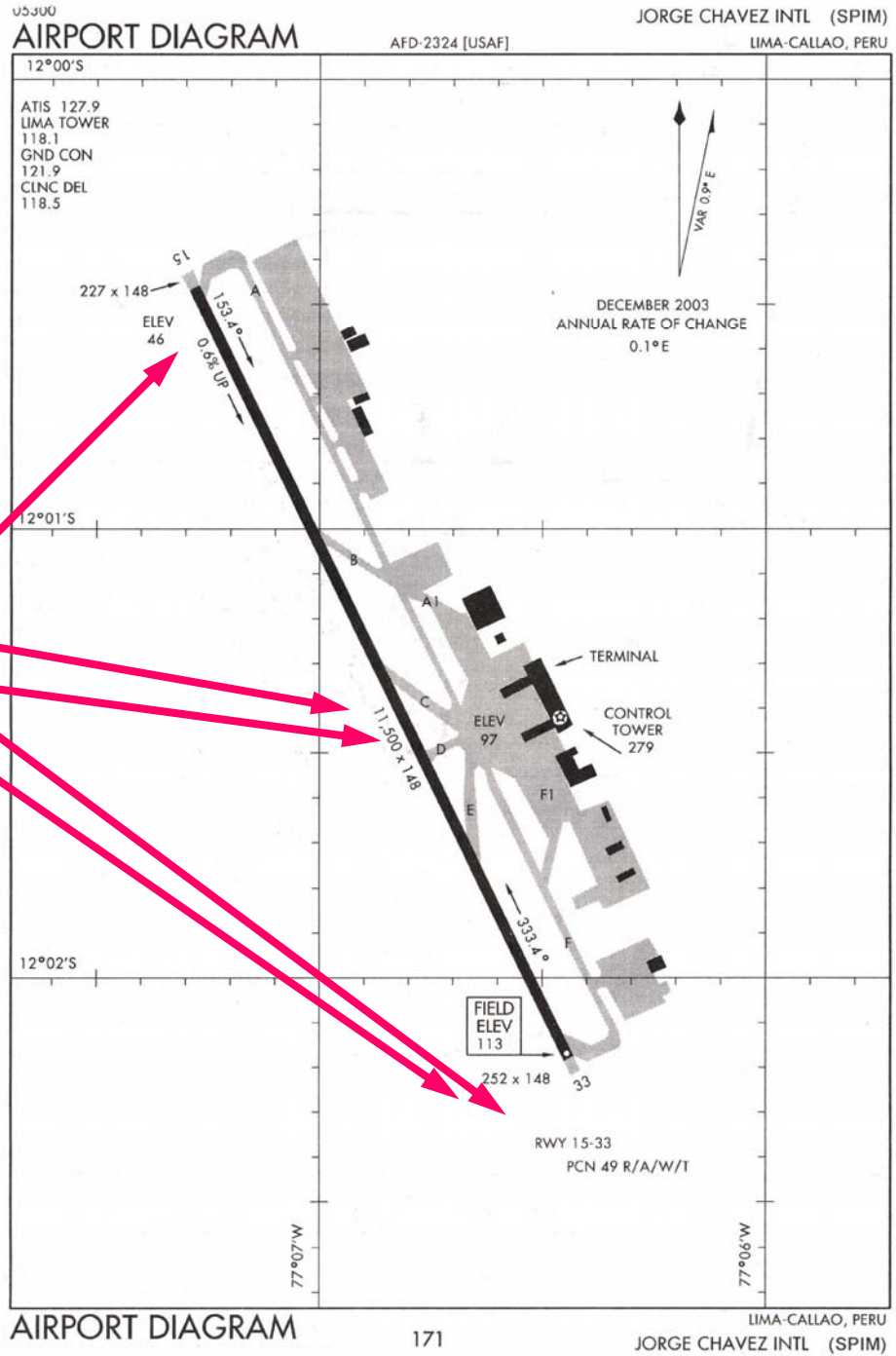


# Runway

<<feature>>  
 AirportHeliport  
 (from AirportHeliport)

<<feature>>  
 Runway

- + designator : txtDesig
- + type : codeTypeRwy
- + length : valDist
- + width : valDist
- + lengthStrip : valDist
- + widthStrip : valDist
- + lengthOffset : valOffset
- + widthOffset : valOffset
- + status : codeStatusSurface
- + profile : txtDescr



# Surface Characteristics

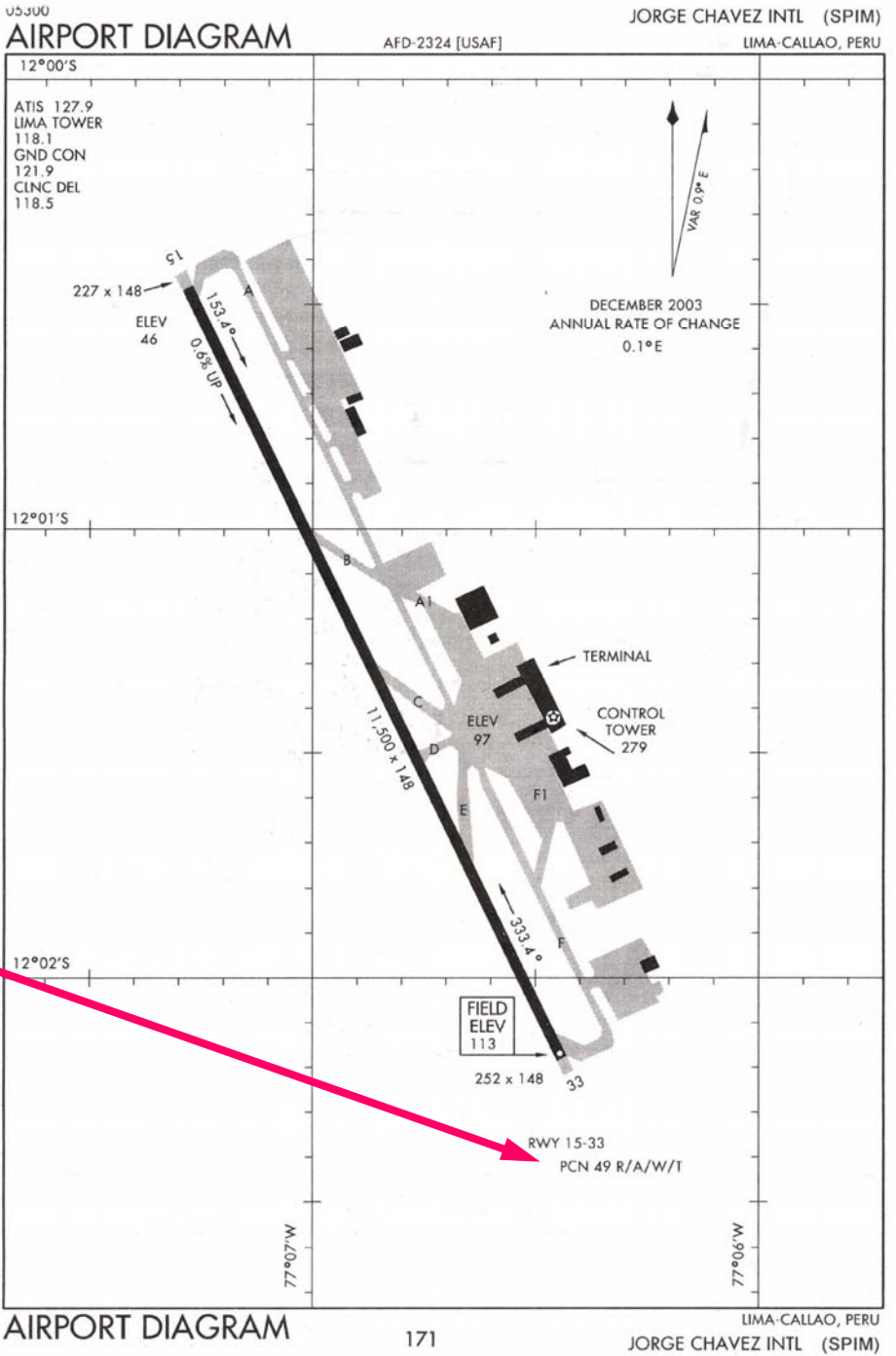
```

<<feature>>
  Runway
+ designator : txtDesig
+ type : codeTypeRwy
+ length : valDist
+ width : valDist
+ lengthStrip : valDist
+ widthStrip : valDist
+ lengthOffset : valOffset
+ widthOffset : valOffset
+ status : codeStatusSurface
+ profile : txtDescr
  
```

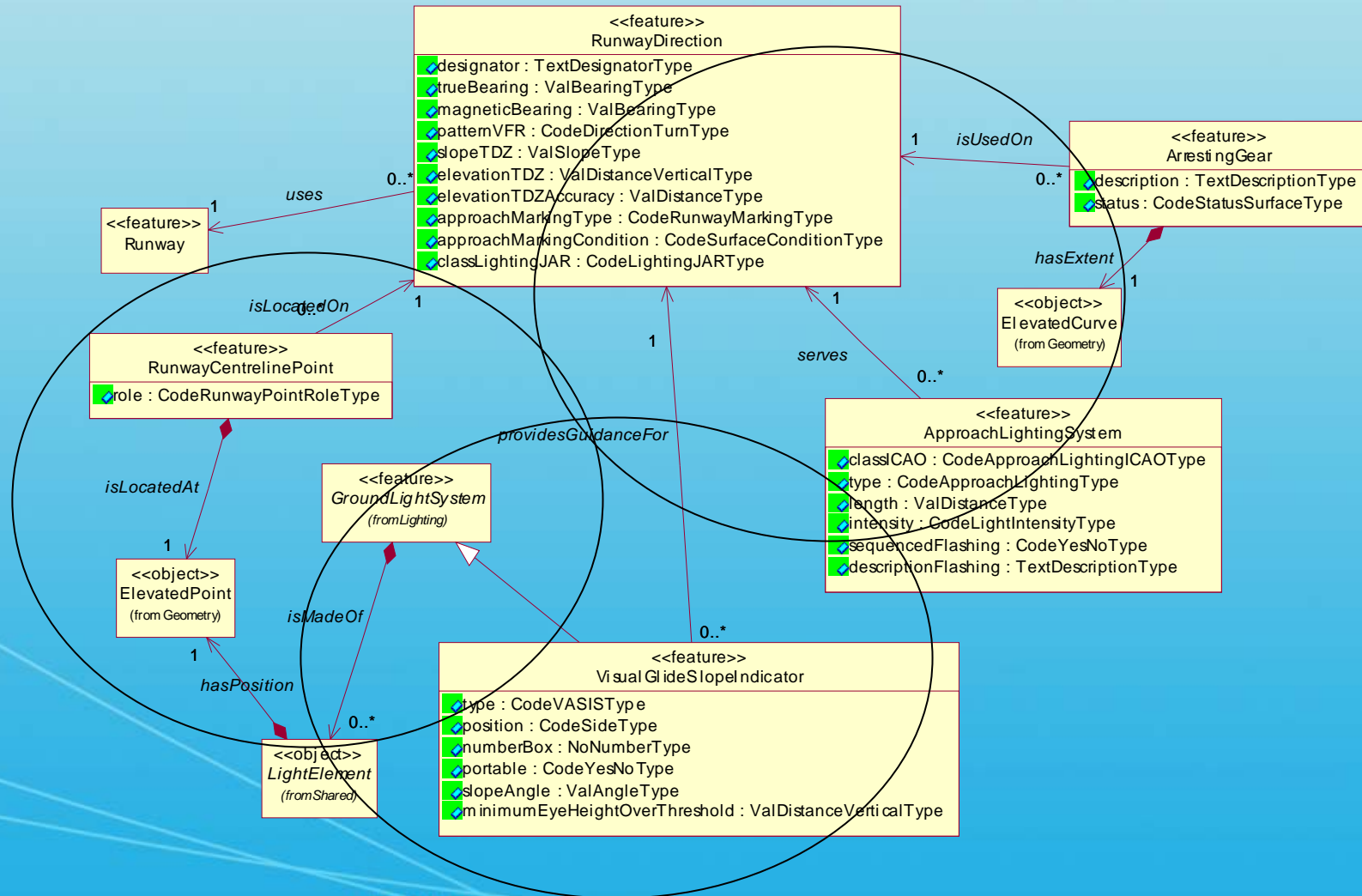
0..1

```

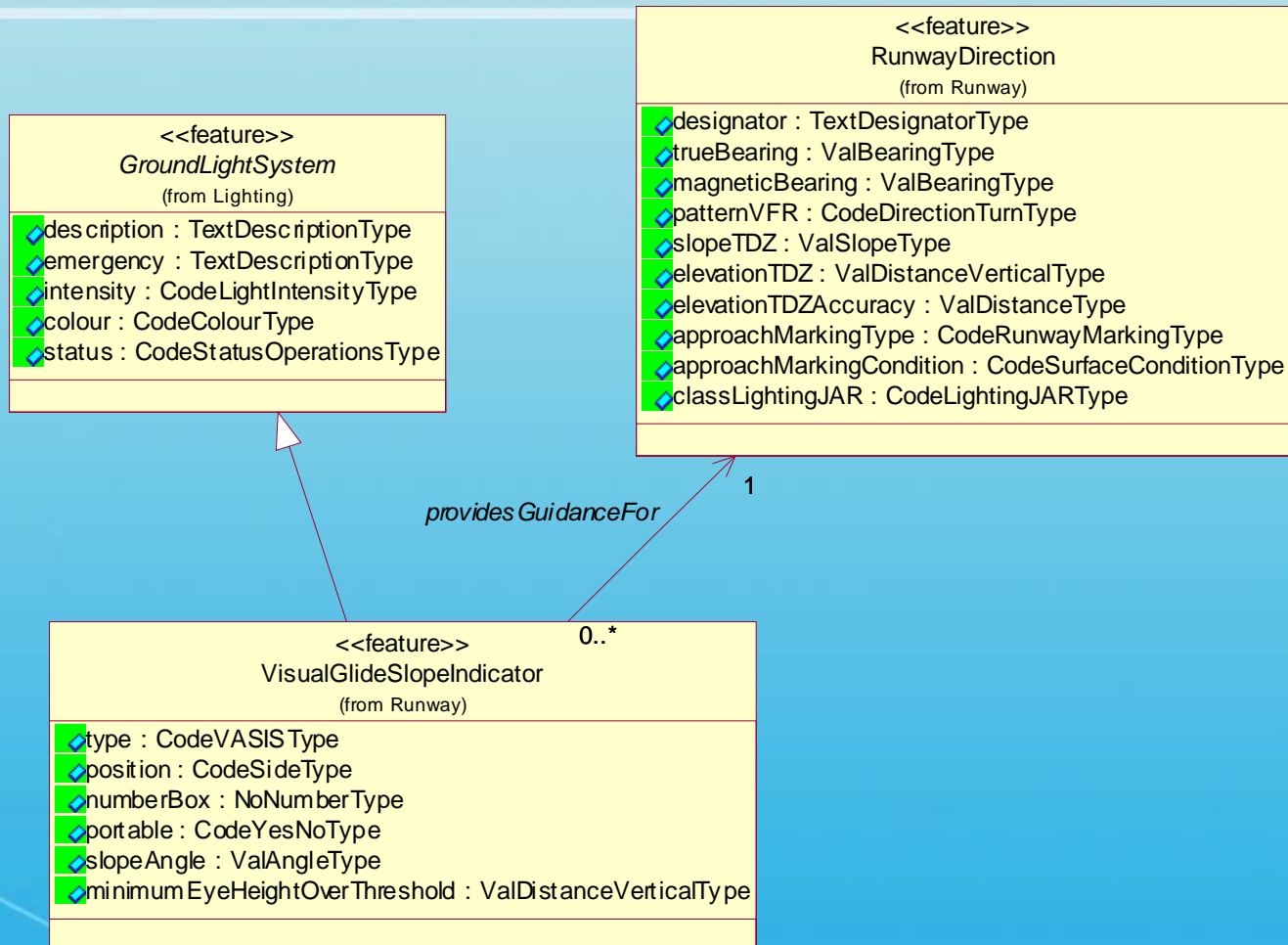
<<object>>
  SurfaceCharacteristics
  (from AirportHeliport)
+ composition : codeCompositionSfc
+ preparation : codePreparationSfc
+ surfaceCondition : codeCondSfc
+ classPCN : valPcnClass
+ pavementTypePCN : codePcnPavementType
+ pavementSubgradePCN : codePcnPavementSubgrade
+ maxTirePressurePCN : codePcnMaxTirePressure
+ evaluationMethodPCN : codePcnEvalMethod
+ classLCN : valLcnClass
+ weightSIWL : valWeight
+ tirePressureSIWL : valPressure
+ weightAUW : valWeight
  
```



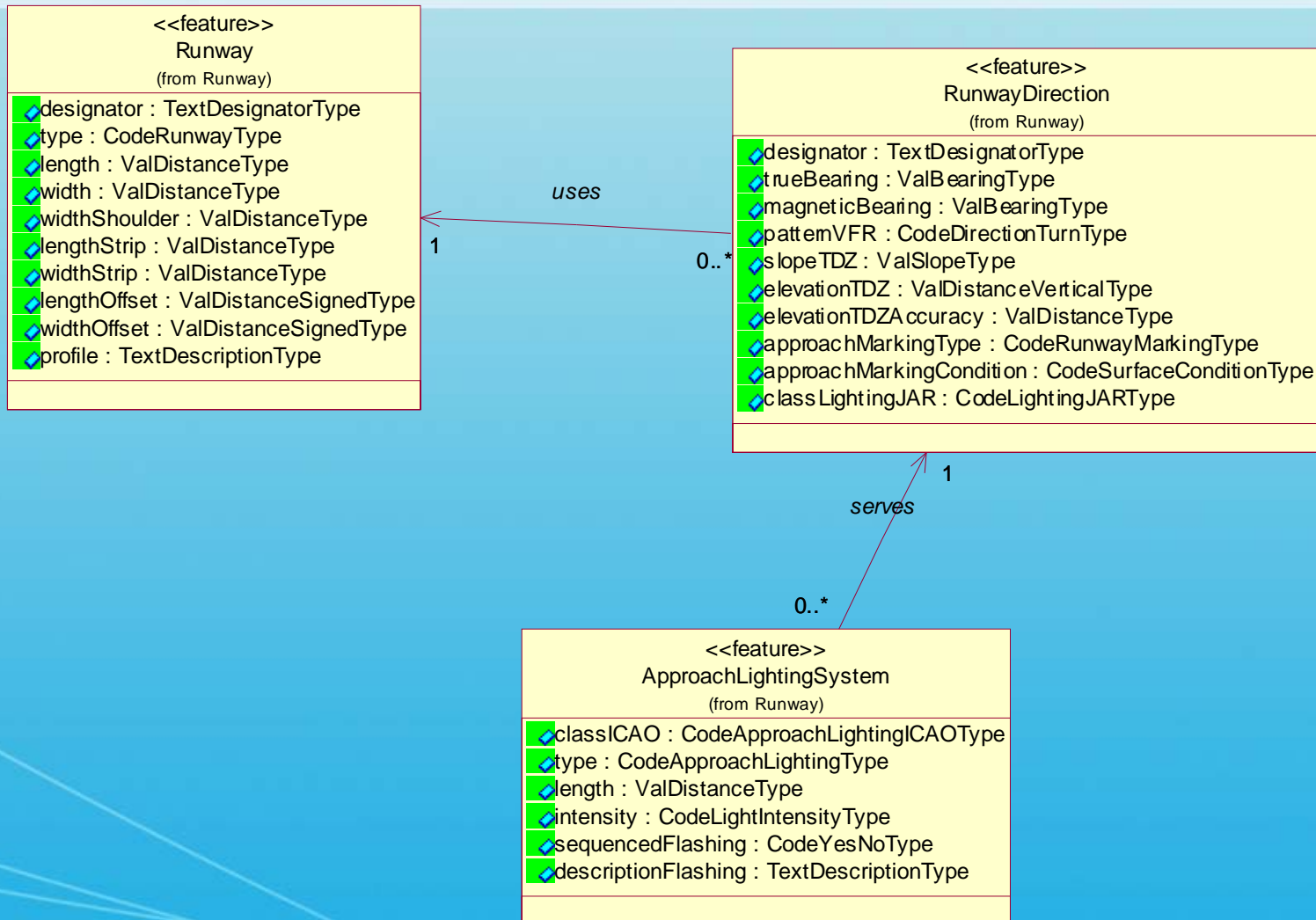
# Runway Direction



# Runway Direction

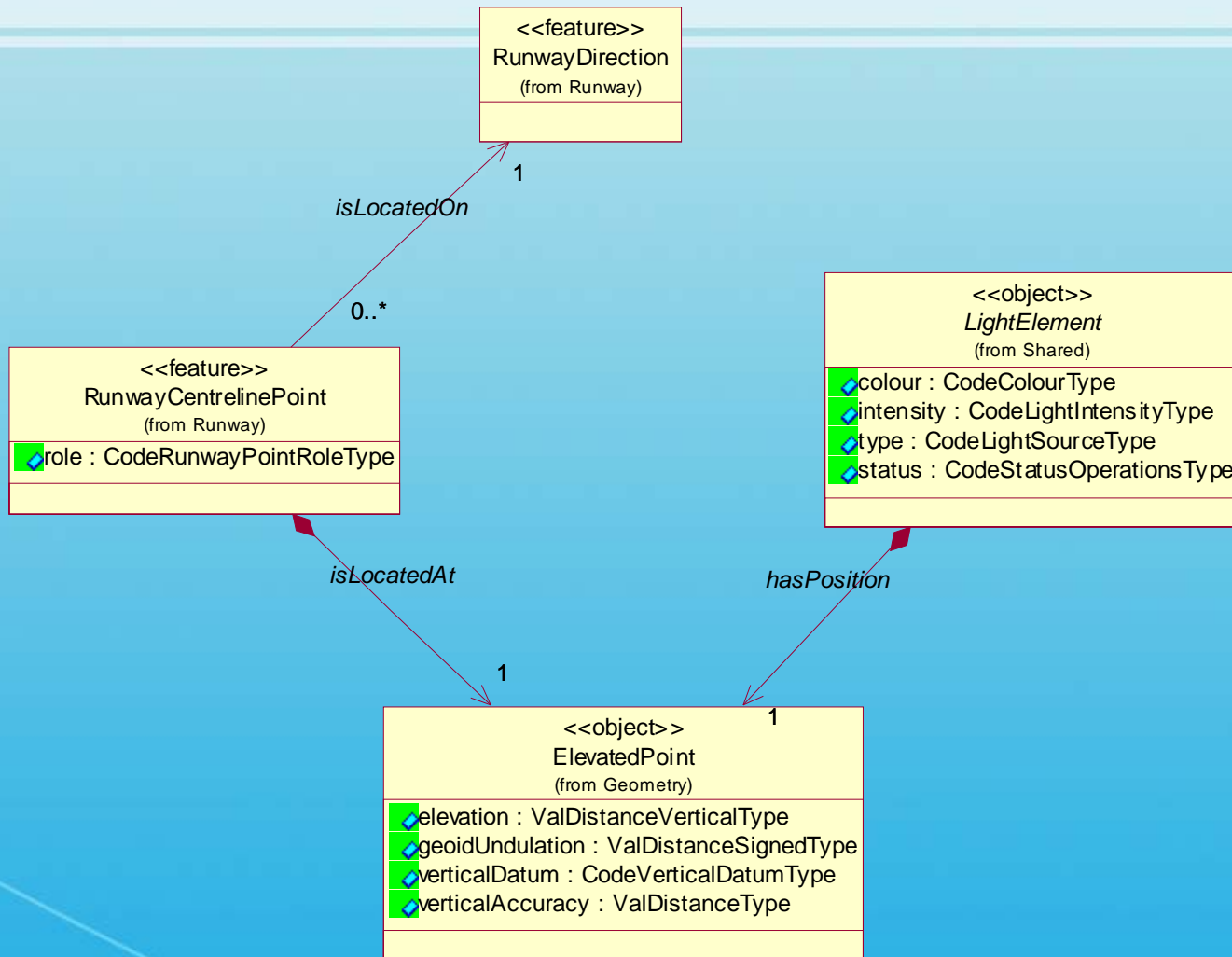


# Runway Direction

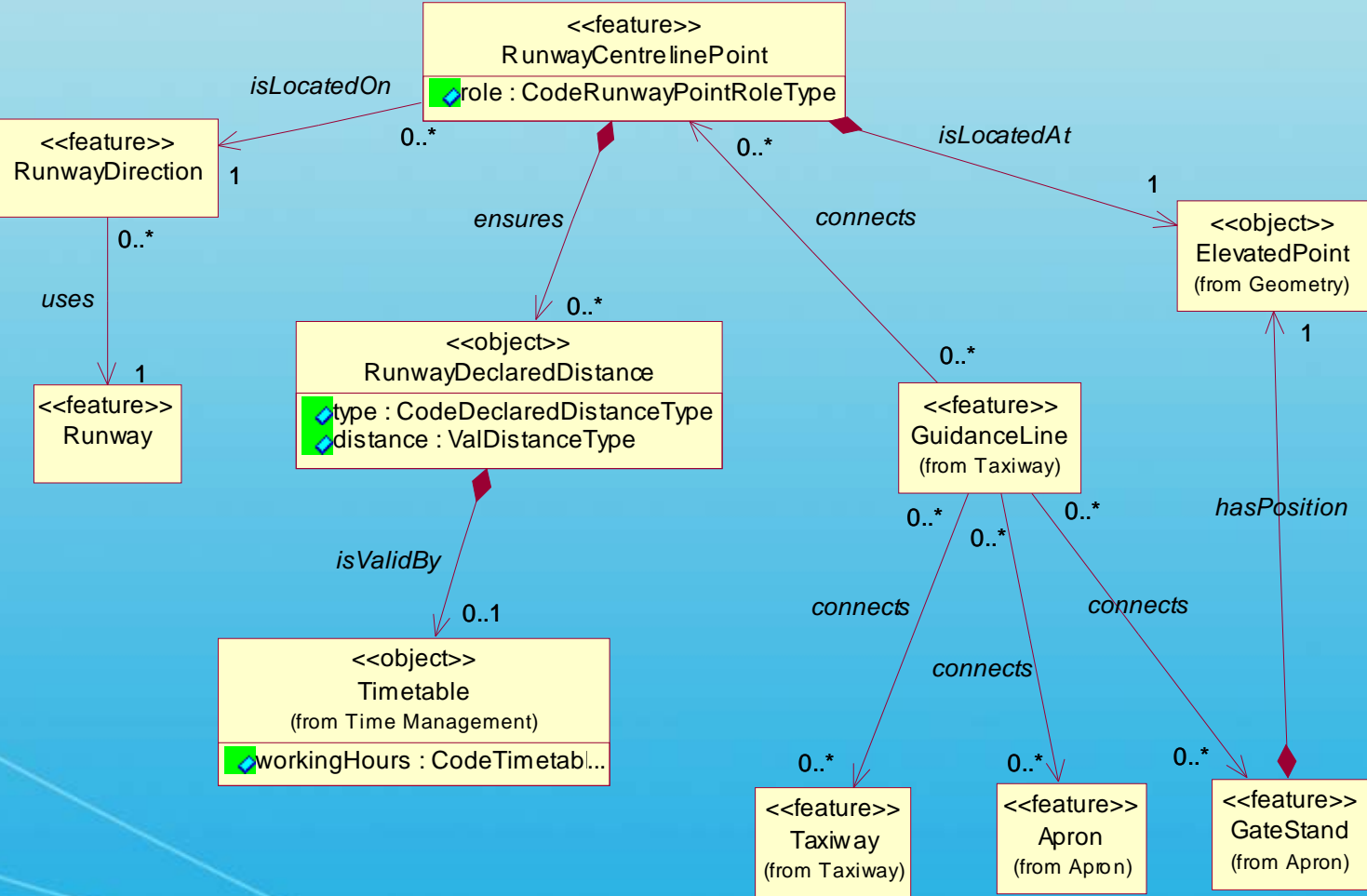




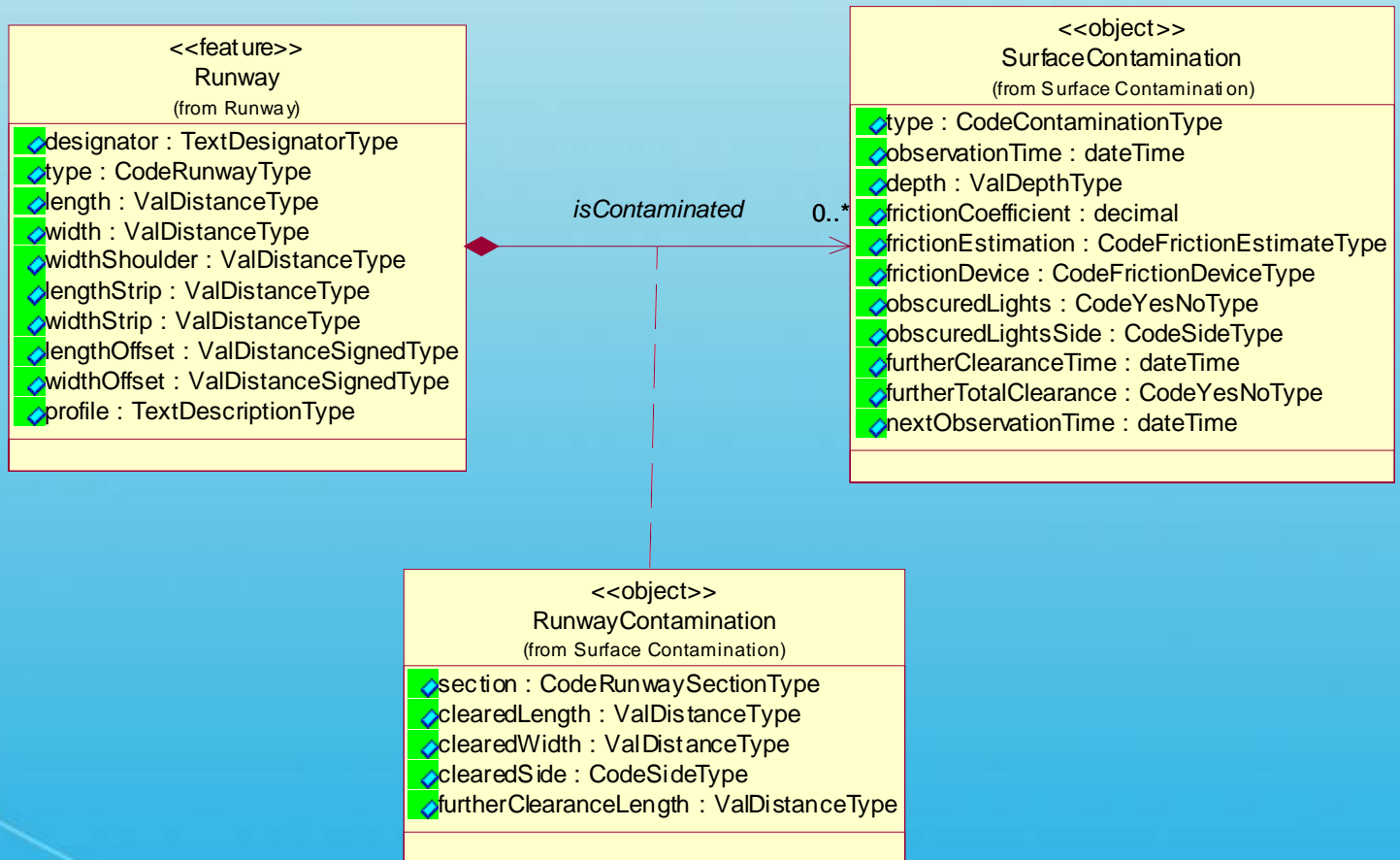
# Runway Direction



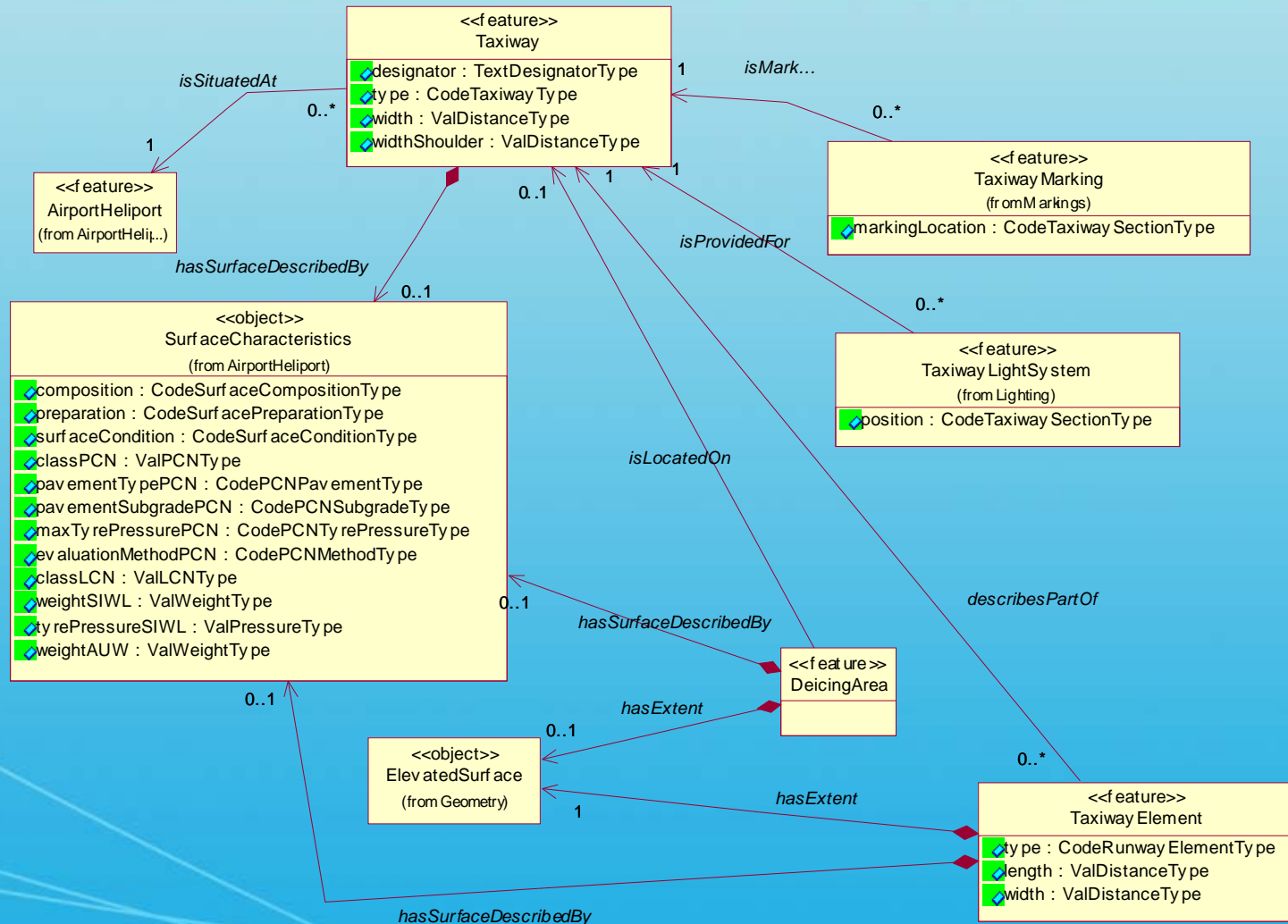
# Runway Operational Points



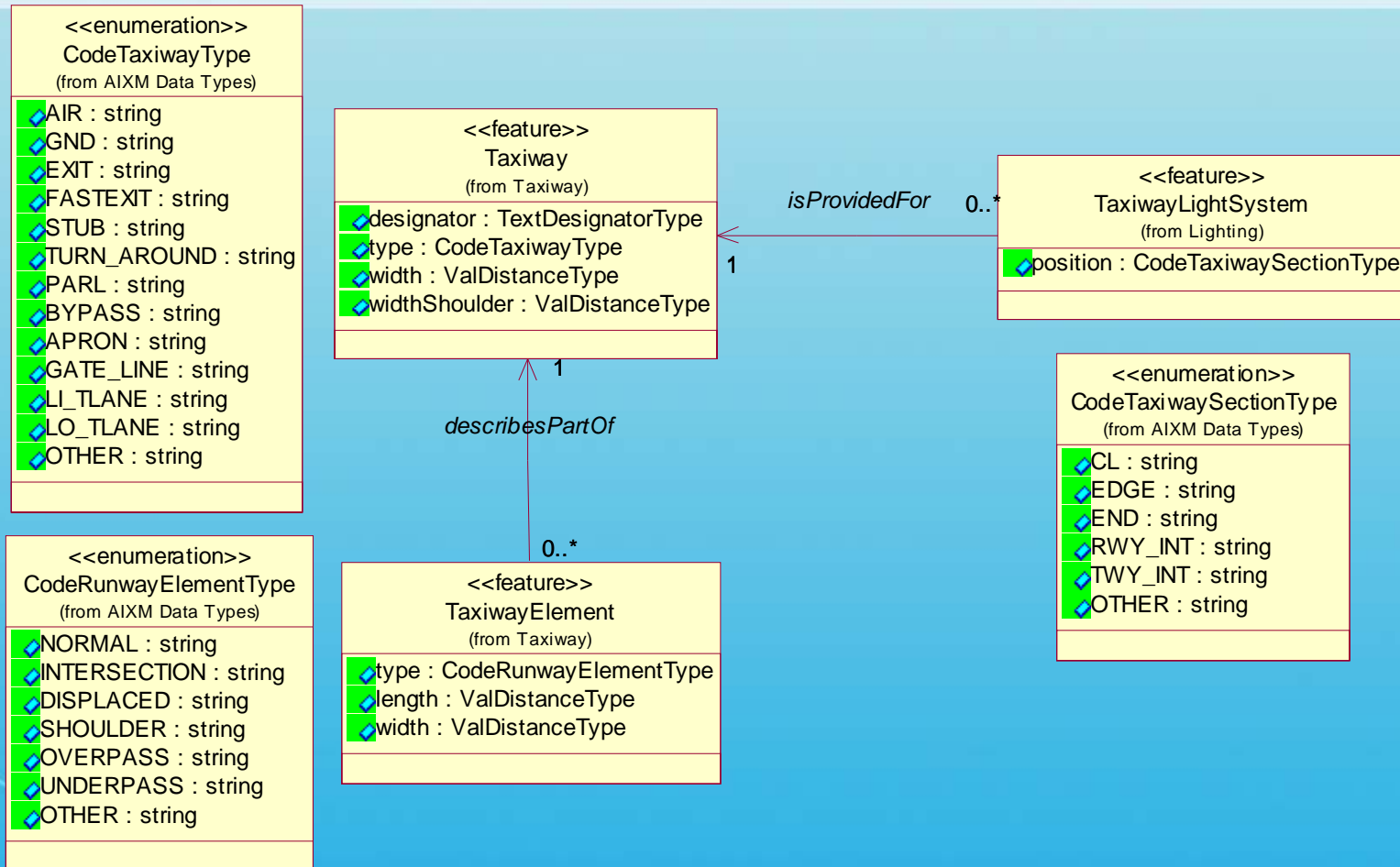
# Runway Surface Contamination



# Taxiway

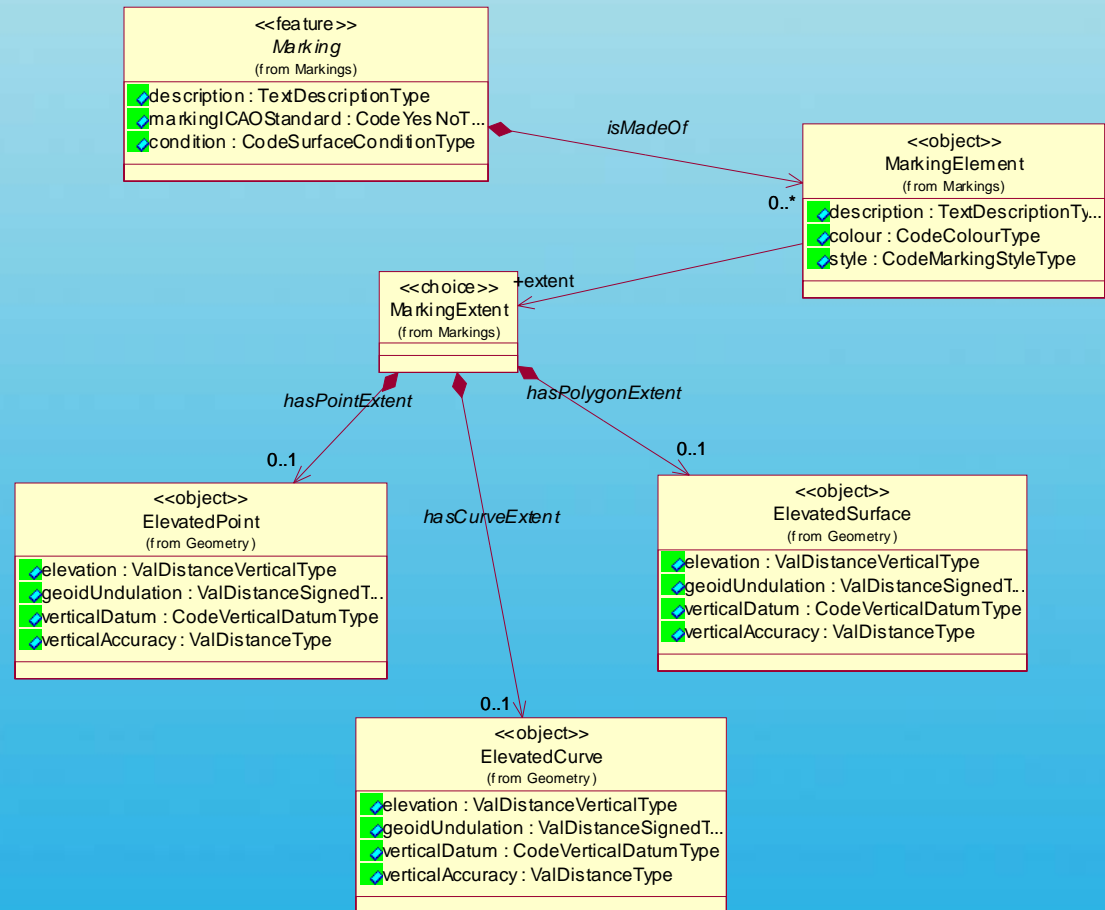


# Taxiway



# Markings

- These apply to:
  - AirportHeliport
  - Runway
  - Taxiway
  - Other features



# Some Markings Associations and their Datatypes

